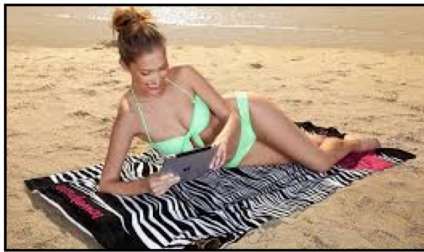


# ¿QUÉ LLEVA?



DIRECTIONS:  
ON A SEPARATE  
PIECE OF PAPER,  
DESCRIBE THE  
FOLLOWING  
WARDROBES IN  
SPANISH. USE  
YOUR GOLD

SHEET AND  
TEXTBOOK  
FOR HELP. BE  
AS DETAILED  
AS YOU CAN.

